

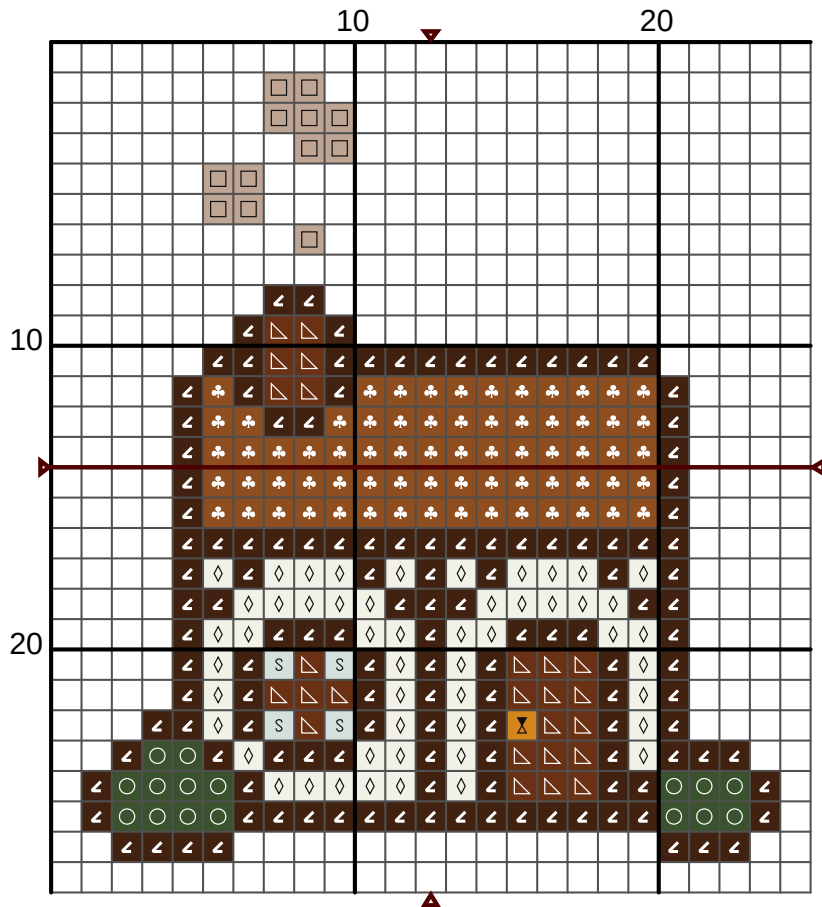
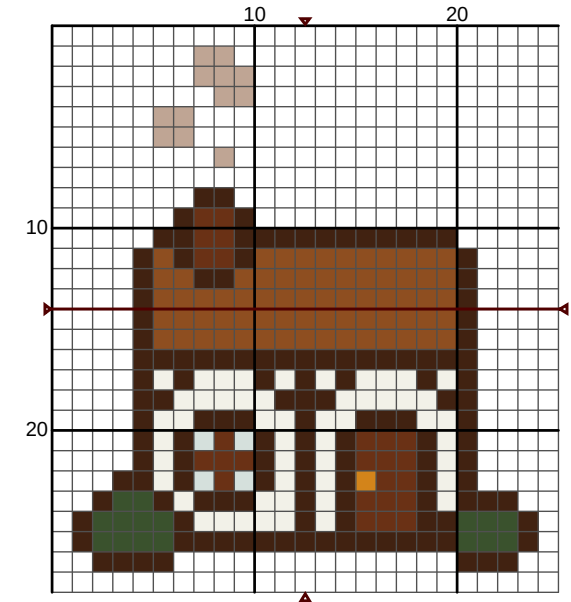
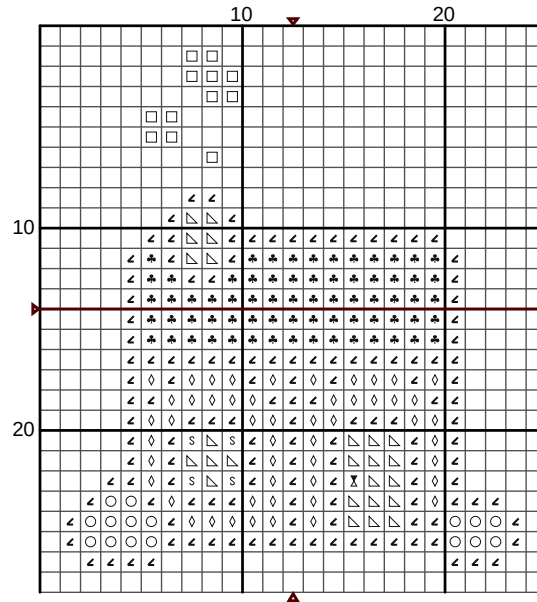


TINY COTTAGE

counted cross stitch pattern

The cottage is 28h x 25w, and uses 8 colours in total.

Pattern was test stitched on 32ct evenweave, using two strands per thread.



N	Symbol	Number	Name	Stitches
1		DMC 06	Driftwood - Medium Light	12
2		DMC 433	Brown - Medium	25
3		DMC 435	Brown - Very Light	69
4		DMC 898	Coffee Brown - Very Dark	134
5		DMC 3362	Pine Green - Dark	16
6		DMC 3756	Baby Blue - Ultra Very Light	4
7		DMC 3852	Straw - Very Dark	1
8		DMC 3865	Winter White	51