



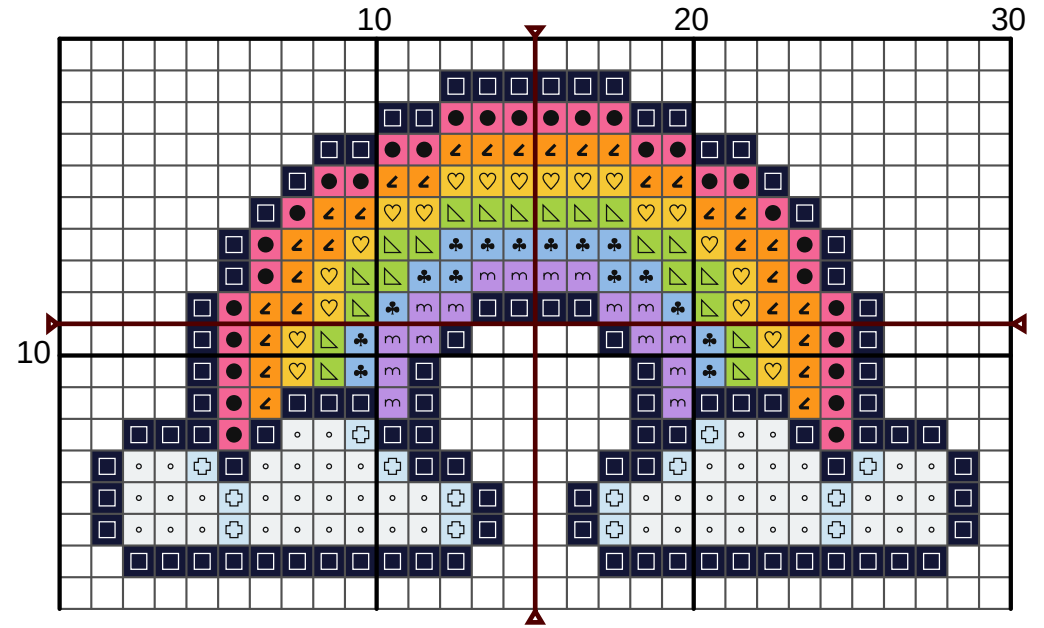
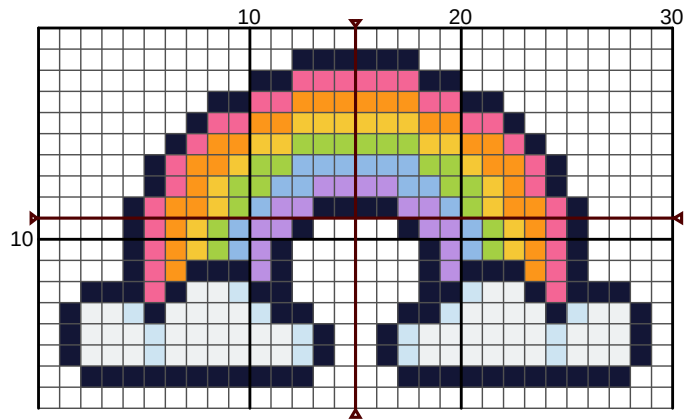
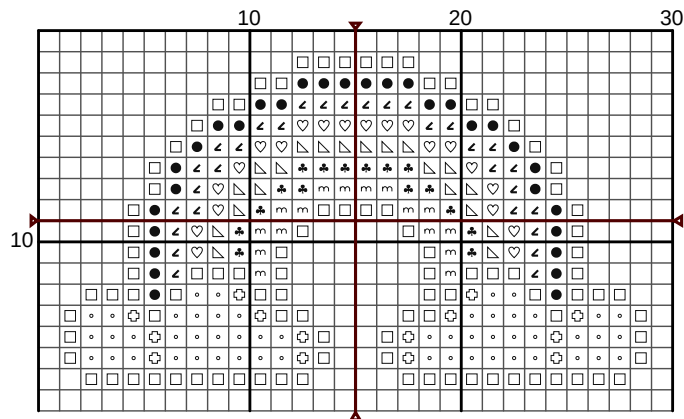
RAINBOW

counted cross stitch pattern

The rainbow is 18h x 30w, and uses 9 colours in total.

Pattern was test stitched on 32ct evenweave, using two strands per thread.

I hope that no matter what 2026 brings, this token helps you stay bright.



N	Symbol	Number	Name	Stitches
1		DMC 16	Chartreuse - Light	20
2		DMC 210	Lavender - Medium	16
3		DMC 603	Cranberry	30
4		DMC 726	Topaz - Light	20
5		DMC 742	Tangerine - Light	30
6		DMC 823	Navy Blue - Dark	96
7		DMC 827	Blue - Very Light	16
8		DMC 3753	Antique Blue - Ultra Very Light	14
9		DMC BLANC	White	52